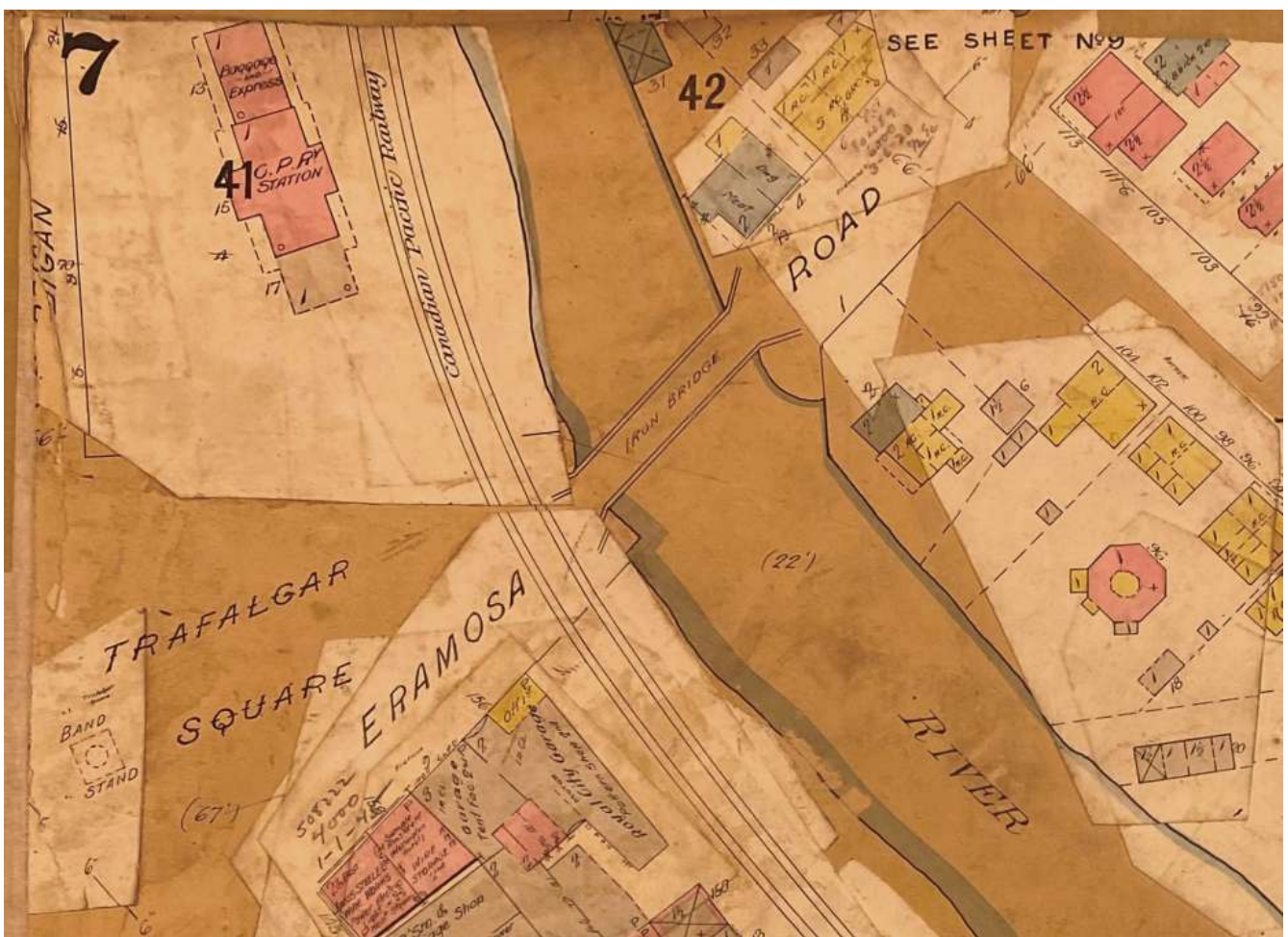


Railway Station Fire Insurance Plans - CPR Station, Guelph Ontario



CPR Station, Charles E. Goad Fire Insurance Plan, November 1907, revised to November 1911



CPR Station, Charles E. Goad Fire Insurance Plan, November 1907, revised to September 1916

Railway Station Fire Insurance Plans - CPR Station, Guelph Ontario



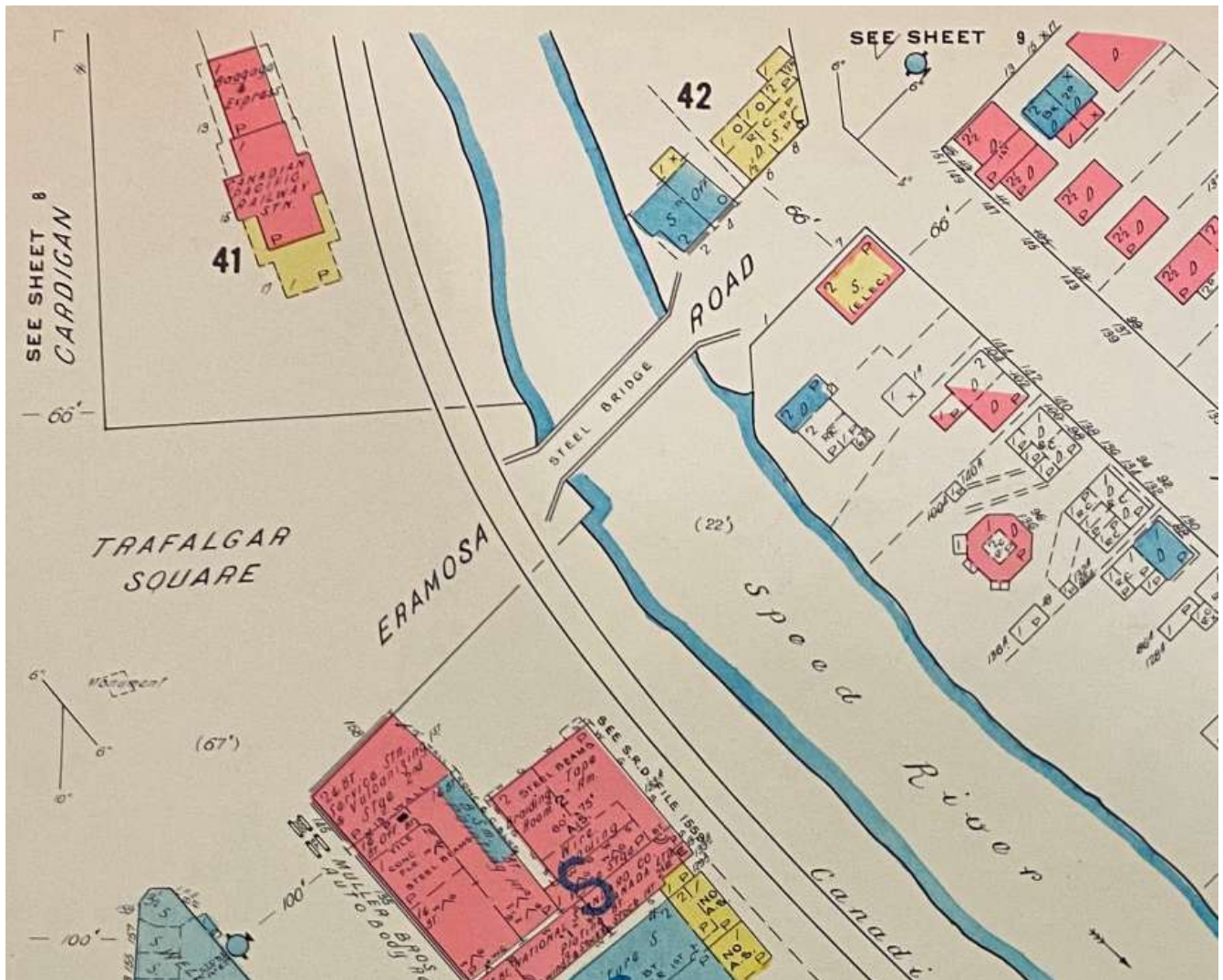
CPR Station, Underwriters Survey Bureau Fire Insurance Plan, March 1922, revised to October 1929



CPR Station, Underwriters Survey Bureau Fire Insurance Plan, March 1922, revised to April 1946

Date: September 2023

Railway Station Fire Insurance Plans - CPR Station, Guelph Ontario



CPR Station, Underwriters Survey Bureau Fire Insurance Plan, June 1960